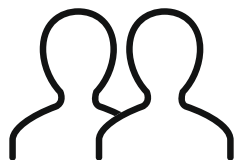


Du behöver

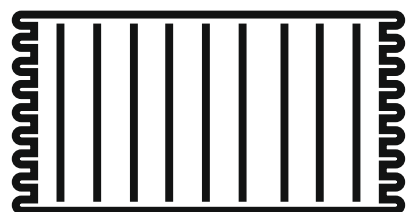
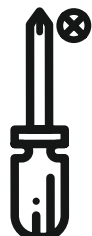
107928/1915



ca 0,5 timmar



2 personer



Lägg din produkt på ett mjukt underlag när du monterar

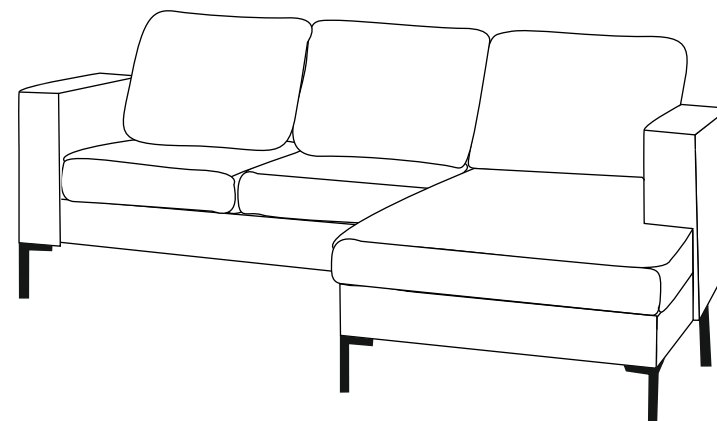


Har du frågor om monteringen av dina möbler?
Hör av dig till din Mio-butik eller ring till vår kundservice 020 66 44 00

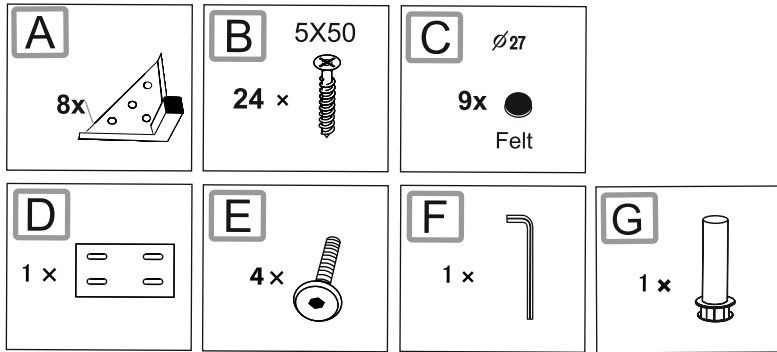
Monteringsanvisning

SIERRA

3-s + schäslong assembly

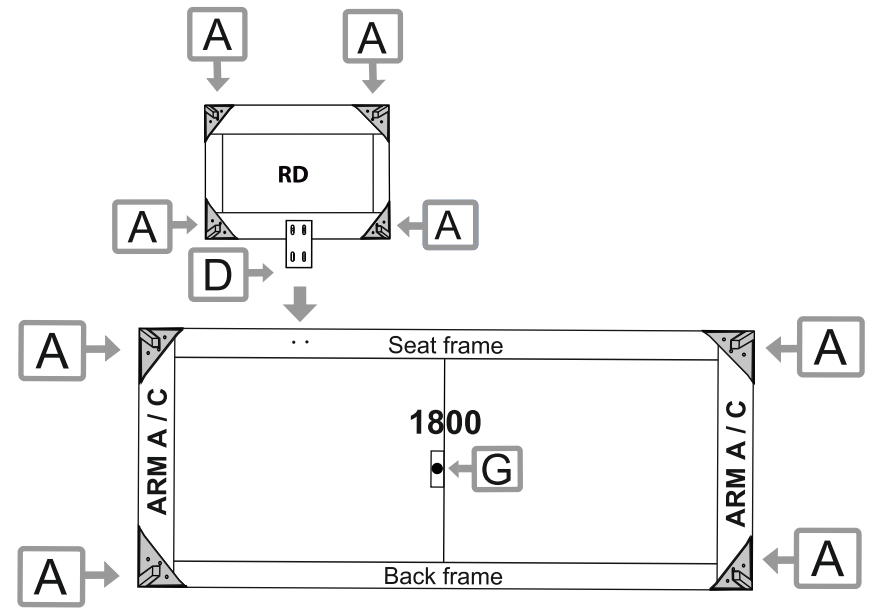
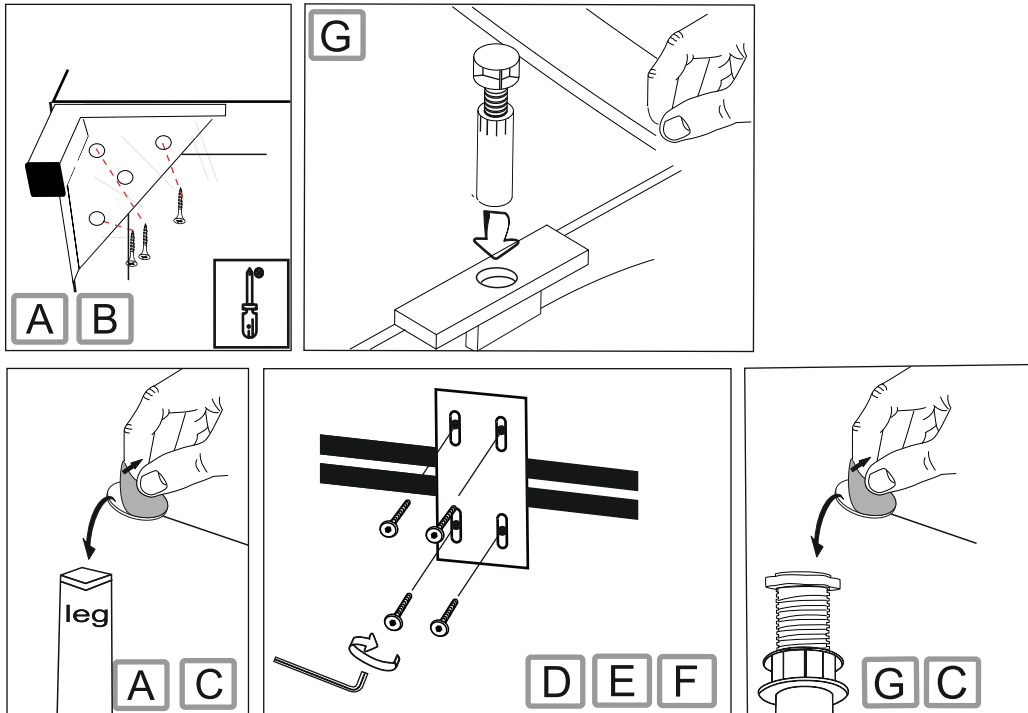


Ingående delar



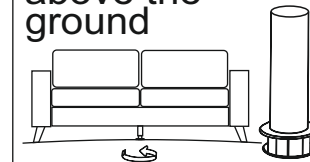
Montering

Följ instruktionerna steg för steg



Important!

screw it 5-6mm
above the
ground



leave 5-6mm

G Connect plastic
support legs to the
pre drilled holes.