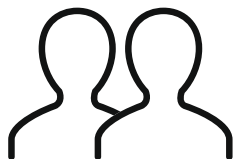


# Du behöver

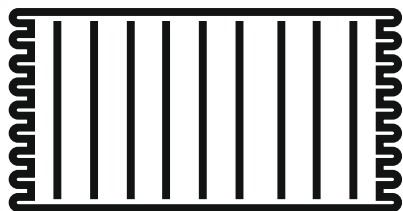
107928/1915



ca 0,5 timmar



2 personer



Lägg din produkt på ett mjukt underlag när du monterar

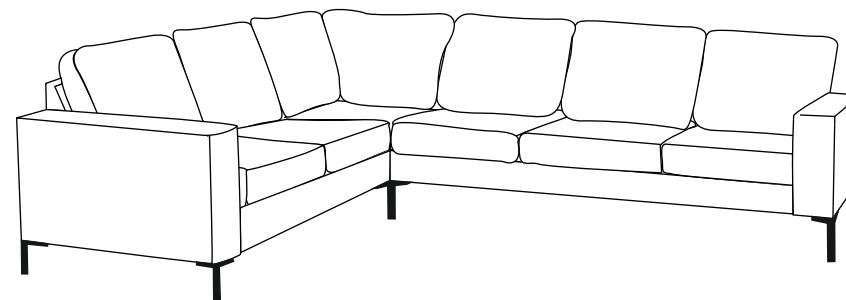


Har du frågor om monteringen av dina möbler?  
Hör av dig till din Mio-butik eller ring till vår kundservice 020 66 44 00

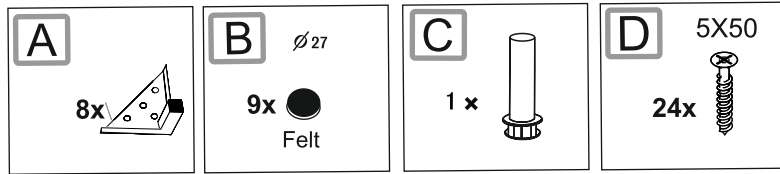
## Monteringsanvisning

# SIERRA

Hörnsoffa 2+3/3+2 assembly

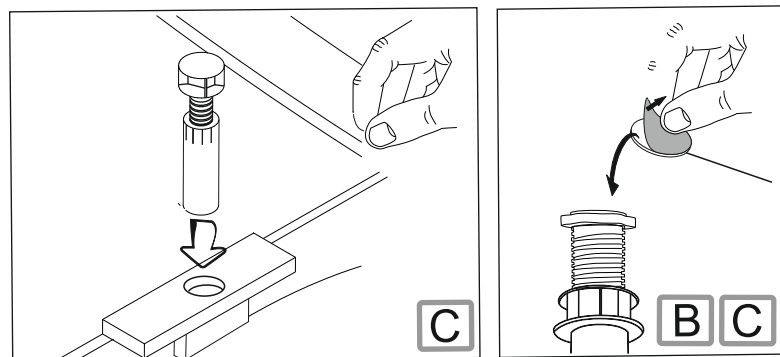
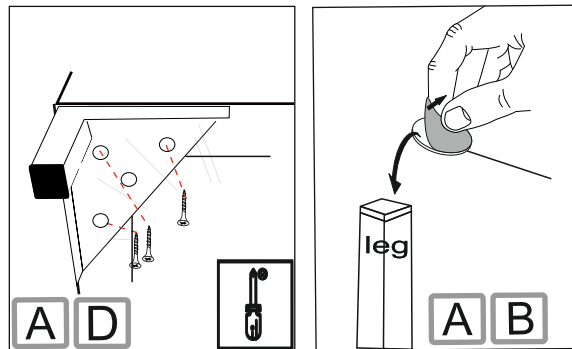


# Ingående delar

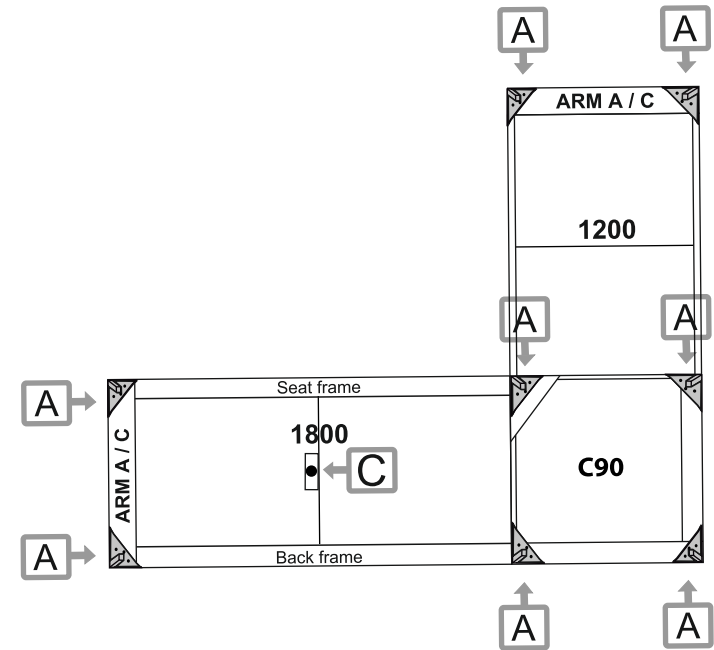


# Montering

Följ instruktionerna steg för steg

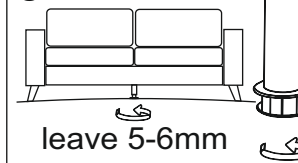


3

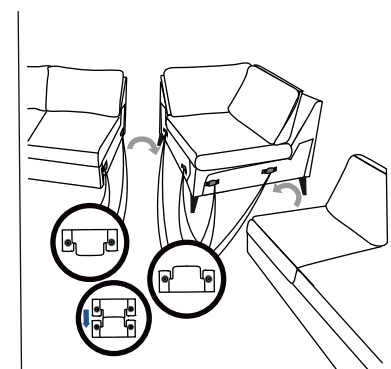


## Important!

screw it 5-6mm  
above the  
ground



**C** Connect plastic  
support legs to the  
pre drilled holes.



4