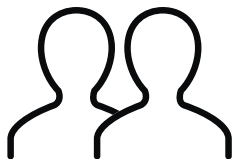


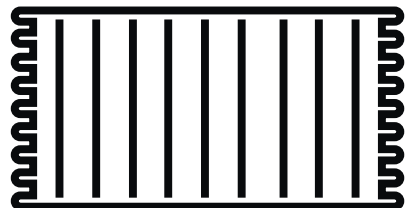
# Du behöver



ca 0,5 timmar



2 personer



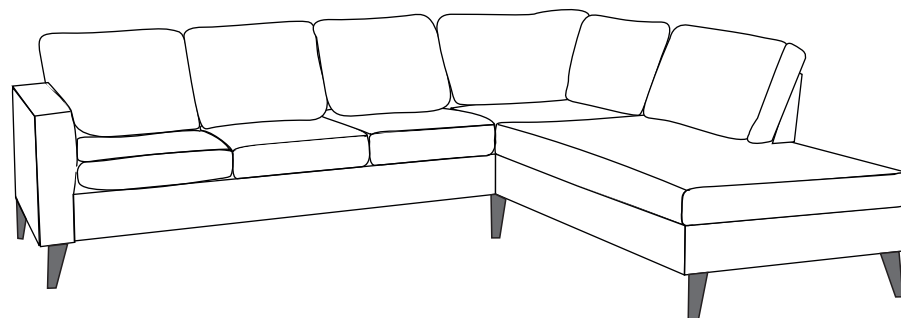
Lägg din produkt på ett mjukt underlag när du monterar



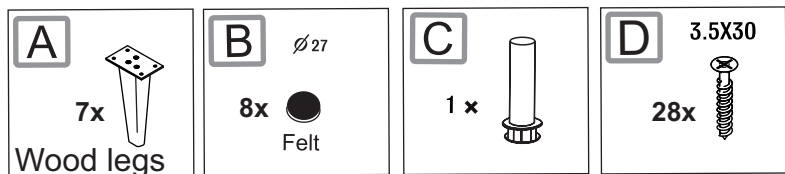
Har du frågor om monteringen av dina möbler?  
Hör av dig till din Mio-butik eller ring till vår kundservice 020 66 44 00

## Monteringsanvisning **SIERRA**

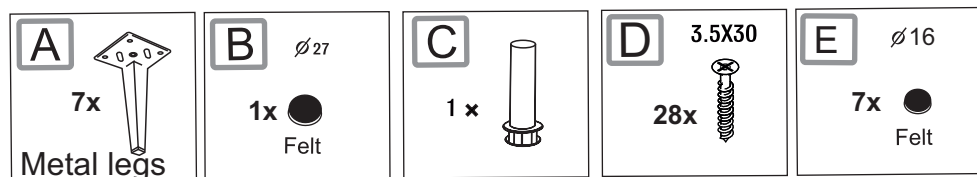
3-seater+divan assembly



# Ingående delar

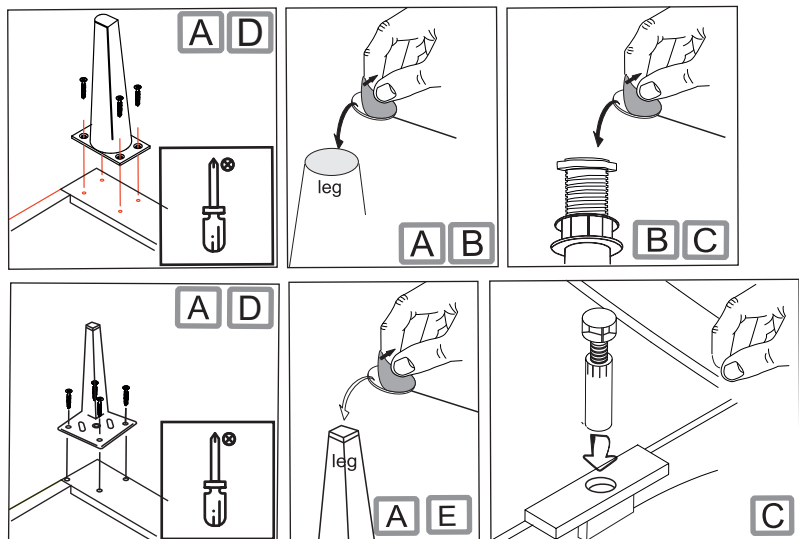


↑  
OR  
↓

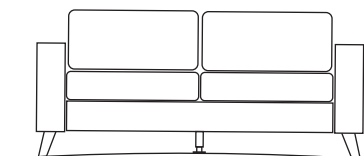
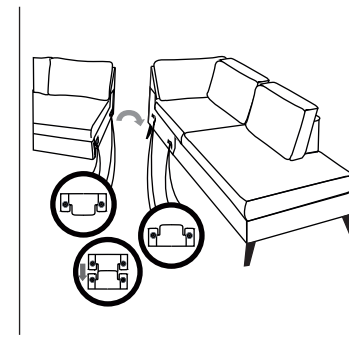
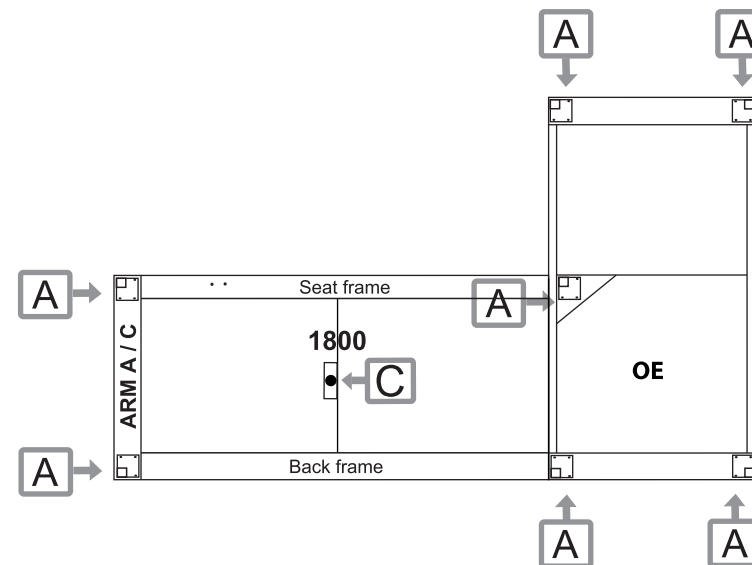


# Montering

Följ instruktionerna steg för steg



3



till golvet



**Viktigt:** Justera in stöben till rätt höjd

4